

EDUCATION PROGRAMME



WHERE LEARNING RUNS WILD!



01245 324043



www.callofthewildzoo.co.uk



Wickford Rd, South Woodham
Ferrers CM3 5QZ



Thank you for your interest in
our education programme!



We bring learning to life through real wildlife experiences – inspiring curiosity, supporting education, and encouraging a deeper understanding of conservation.

Our dedicated education spaces are designed to deliver engaging, interactive experiences for all ages.

WHAT'S INCLUDED?

YOUR VISIT

- ✓ Discounted zoo admission
- ✓ Free entry for teachers and teaching assistants (in accordance with our free adult ratio)



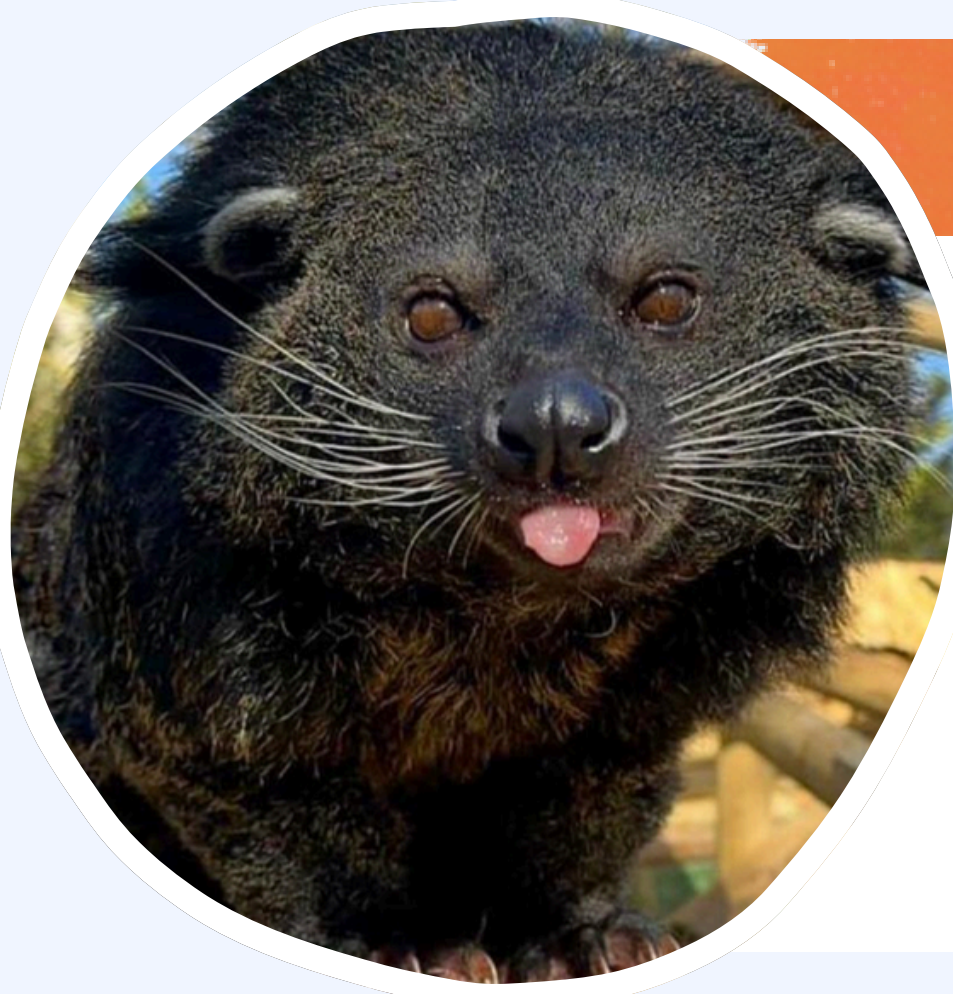
LEARNING AND EXPERIENCE

- ✓ Free education session or discounted self-led visit
- ✓ Access to daily talks and demonstrations



EDUCATION SESSIONS

FE & HE ANIMAL SESSIONS



At Call of the Wild Zoo, our animal training programmes focus on positive reinforcement techniques to enhance animal welfare and ensure the safety of both animals and staff. Students will learn how training helps animals participate voluntarily in health checks, feeding routines, and enrichment activities, minimising stress and promoting natural behaviours. This session links directly to Animal Behaviour, Animal Care, and Veterinary Studies, offering practical insights into how zoos manage and care for their animals effectively through well-designed training programmes.

FE & HE ANIMAL BEHAVIOUR

Understanding animal behaviour is crucial for anyone pursuing a career in zoology, animal care, or veterinary science. Our workshops explore species-specific behaviours in both wild and captive environments, shedding light on how animals communicate, socialise, and adapt to their surroundings. By observing animals at Call of the Wild Zoo, students can analyse behavioural patterns and evaluate the impact of captivity on natural instincts, helping them apply theoretical knowledge to real-world settings.



FE AND HE ANIMAL ENRICHMENT

Enrichment plays a critical role in enhancing the quality of life for animals in captivity by encouraging natural behaviours and mental stimulation. At Call of the Wild Zoo, students will explore various enrichment strategies, from puzzle feeders to environmental changes, and their effect on animal welfare. This topic is particularly relevant for those studying Animal Care and Zoology, as it demonstrates how behavioural enrichment reduces stress and promotes positive health outcomes in zoo animals.



FE AND HE ENCLOSURE DESIGN

Well-designed enclosures are essential to animal health, safety, and overall wellbeing. During our sessions on enclosure design, students will learn about the principles of creating habitats that mimic natural environments while meeting the physical and psychological needs of different species in captivity. These workshops are ideal for students studying Animal Management, Veterinary Studies, and Environmental Science, as they offer practical knowledge on how zoos balance animal welfare, conservation, and visitor engagement through thoughtful design.



FE AND HE CAREERS IN ANIMAL CARE AND CONSERVATION

A career in animal care or conservation offers a wide range of opportunities, from zoo management to fieldwork in wildlife reserves. Our career-focused sessions at Call of the Wild Zoo provide students with insight into the qualifications, skills, and experiences required to work in this competitive field. We highlight the diversity of roles available within the zoo, conservation organisations, and wildlife research, offering students guidance on how to pursue their chosen career path effectively.



FE AND HE ANIMAL CONSERVATION

Conservation is at the heart of modern zoos' missions, and Call of the Wild Zoo is no exception. Our conservation-focused workshops teach students about the role of zoos in global conservation efforts, including captive breeding programmes, species reintroduction, habitat restoration and the importance of education. Students studying Biology, Environmental Science, and Conservation will gain an understanding of the vital work zoos do to protect endangered species and promote biodiversity.





2026/2027 PRICE LIST



STUDENTS

Admission (Including education session)£9.50

Self-guided visit (No education session)£8.00



ADULT RATIO

Free adult ratio for FE and HE students: 1:10

Additional adults outside of the ratio:£9.60

VAT NOT INCLUDED

UPON ARRIVAL

WHEN ARRIVING AT CALL OF THE WILD ZOO:



There will be a designated coach parking area sectioned off with traffic cones. Please park in this designated area.



A member of staff will board the bus to provide the lead teacher with a form to complete and deliver a health and safety briefing to the students.



Please ask all students to remain seated on the bus until the member of staff has completed the health and safety briefing.



When getting off the coach, please walk straight to the public footpath and enter the zoo via the exit and gift shop.

ENJOY YOUR VISIT!



TERMS AND CONDITIONS

Booking confirmation: School visits must be confirmed with Call of the Wild Zoo in advance through our booking system. Confirmation is subject to availability and completion of necessary paperwork.

Supervision: Schools must ensure an adequate ratio of supervising adults to students as per their institutions guidelines. Call of the Wild Zoo staff will not be responsible for the direct supervision of visiting students.

Arrival Time: Schools must arrive promptly at the designated time for their education session. Late arrivals may result in a shortened session or cancellation.

Storage of Belongings: Every effort will be made to provide adequate storage facilities of belongings.

Behaviour: Students are expected to conduct themselves appropriately during their visit. Any disruptive behaviour that poses a risk to themselves, others, or the animals will not be tolerated. Call of the Wild Zoo reserves the right to remove individuals or groups exhibiting such behaviour from the premises without refund.

Animal Welfare: Visitors must adhere to all guidelines and instructions provided by Call of the Wild Zoo staff regarding animal welfare and safety. No feeding, teasing, or disturbing the animals is permitted.

Photography and Filming: Photography and filming for personal use are allowed during the visit, but any commercial or promotional use of images or footage taken at the zoo requires prior written consent from Call of the Wild Zoo management.

Emergency Procedures: In the event of an emergency, visitors must follow the instructions of Call of the Wild Zoo staff. Emergency exits and evacuation routes are clearly marked throughout the premises.

Health and Safety: Schools are responsible for ensuring that all students are in good health and able to participate safely in the educational activities provided. Any medical conditions or special requirements must be communicated to Call of the Wild Zoo staff in advance.

Cancellation Policy: Please note that Call of the Wild Zoo does not offer refunds for cancelled bookings. However, we do understand that unforeseen circumstances may arise, and we are happy to accommodate changes to the date of your visit, subject to availability.

Payment: Payment for school visits and education sessions must be made in accordance with the terms outlined in your booking agreement. A 30% deposit is to be made with initial booking. Full payment to be made no more than 7 days after your visit date. Failure to provide payment by the specified date may result in the cancellation of your reservation.

Feedback: Call of the Wild Zoo welcomes feedback from visiting schools to improve the quality of our educational programmes. Please share your comments, suggestions, or concerns with our staff before, during or after your visit.

By confirming a booking with Call of the Wild Zoo, schools agree to comply with the above terms and conditions. Failure to adhere to these terms may result in the termination of the visit without refund.

Education Session Times: The timing of the education sessions will be confirmed on the morning of your visit with the lead teacher or designated school representative. Please note that session times may be subject to change due to day-to-day variables, such as weather conditions, staff availability, or unexpected circumstances. Call of the Wild Zoo will make every effort to accommodate any necessary changes and will communicate them promptly to the visiting school. Your understanding and flexibility in this matter are greatly appreciated.

Keeper Talk Times: While every effort will be made to adhere to the scheduled keeper talk times, Call of the Wild Zoo reserves the right to change the timing or content of keeper talks without prior notice. Such changes may be necessary due to unforeseen circumstances, animal welfare considerations, or operational requirements. Any alterations to the keeper talk schedule will be communicated to visiting schools as soon as possible.

Lunch Facilities: Please be advised that Call of the Wild Zoo does not have the facilities to reserve specific lunch areas for visiting schools. However, we assure you that there are plenty of picnic tables and a large undercover picnic area available on the zoo premises. Visitors are encouraged to explore these areas upon arrival and choose a suitable spot for their group. We appreciate your understanding and cooperation in making use of the available facilities.